



TECHNICAL GUIDE FOR INSTALLATIONS WITH ISS 1PLAY

STAND ALONE SINGLE PHASE _A

DESIGNED BY	<i>B.R.S</i>
DATE	<i>04/01/2017</i>
REVISED BY	<i>B.R.S</i>
REVISION DATE	<i>31/05/2017</i>
APPROVED BY	<i>D.B.R</i>

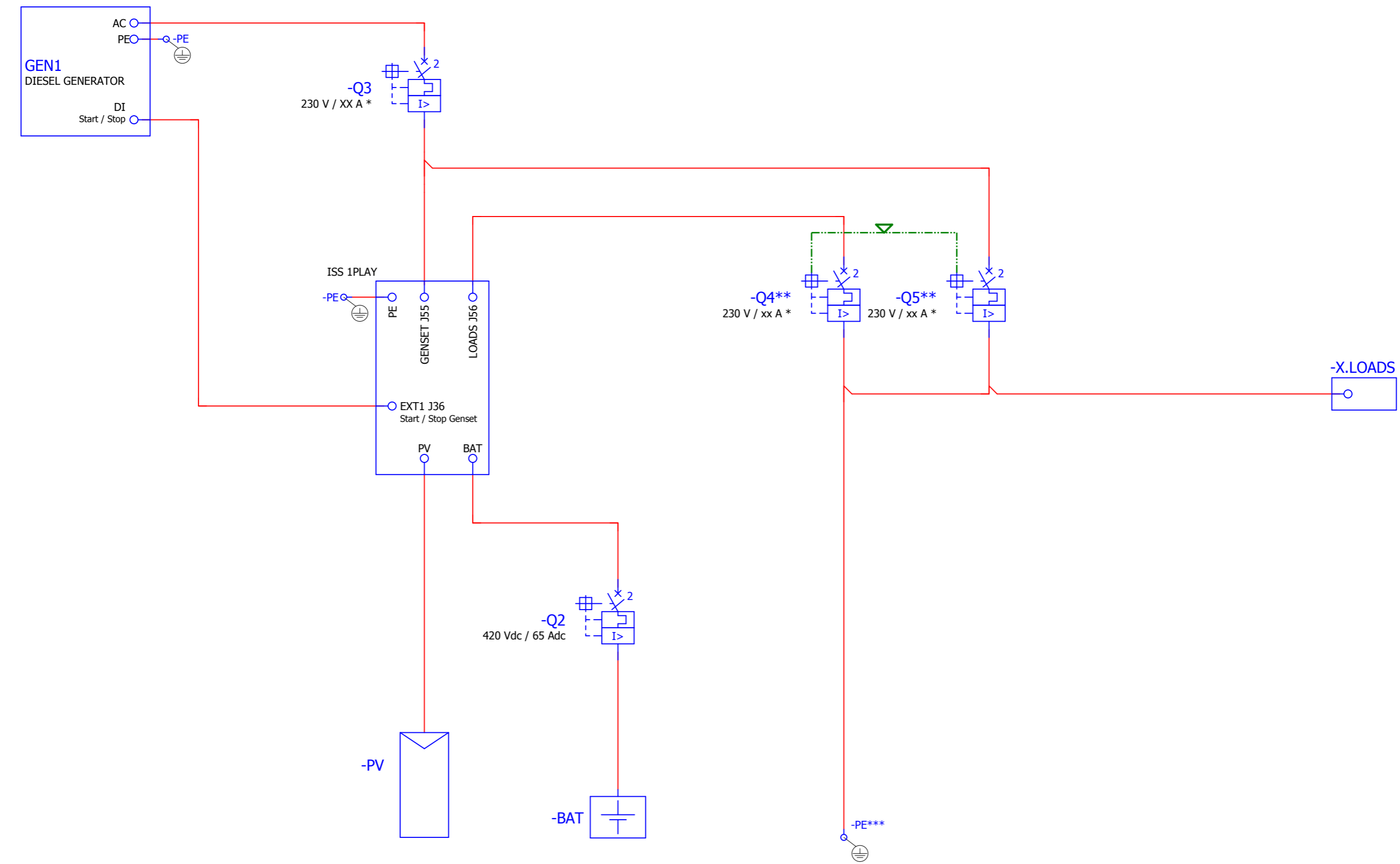
"The reproduction, distribution and utilization of this document as well as the communication of its contents to others without express authorization is prohibited. Offenders will be held liable for the payment of damages. All rights reserved."
ISO 16016

"Sin expresa autorización de Ingeteam, queda terminantemente prohibida la reproducción total o parcial de este documento, así como su uso indebido y/o exhibición o comunicación a terceros. De los infractores se exigirá el correspondiente resarcimiento de daños y perjuicios. Quedan reservados todos los derechos."
ISO 16016

					Date	04/01/2017
					Designed	B.R.S
A	31/05/2017	B.R.S	B.R.S	D.B.R	Revised	B.R.S
Rev	Date	Designed	Revised	Approved	Approved	D.B.R



TECHNICAL GUIDE FOR INSTALLATIONS WITH ISS 1PLAY
STAND ALONE SINGLE PHASE _A
COVER PAGE



* The nominal current depends on the power of the installation

** -Q4 and -Q5 are interlocked. In normal operating conditions -Q4 should be closed. -Q5 should only be operated in case of failure or inverter maintenance.

*** For TN and TT installations connect N to ground

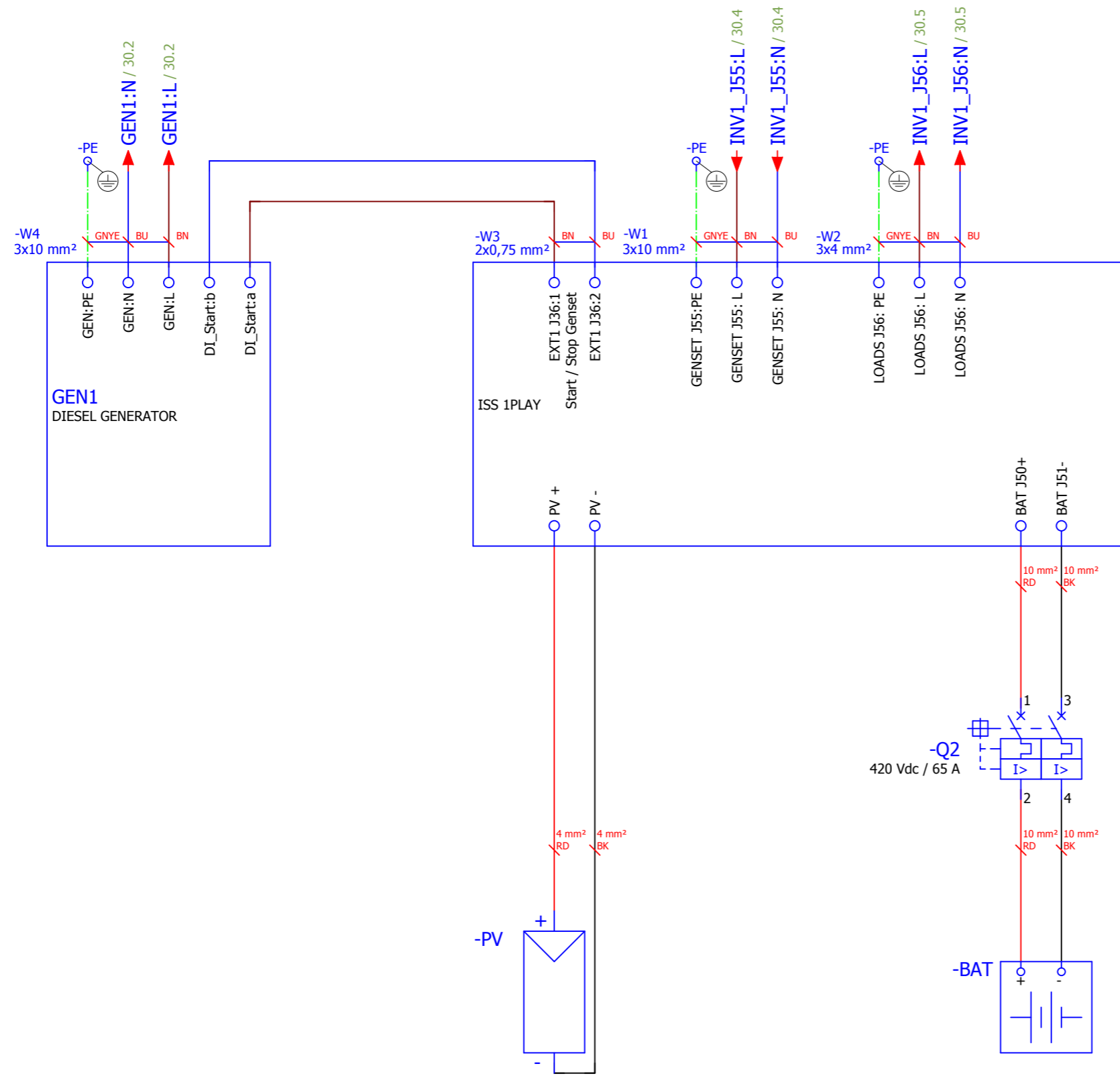
"The reproduction, distribution and utilization of this document as well as the communication of its contents to others without express authorization is prohibited. Offenders will be held liable for the payment of damages. All rights reserved." ISO 16016

"Sin expresa autorización de Ingeteam, queda terminantemente prohibida la reproducción total o parcial de este documento, así como su uso indebido y/o exhibición o comunicación a terceros. De los infractores se exigirá el correspondiente resarcimiento de daños y perjuicios. Quedan reservados todos los derechos." ISO 16016

					Date	04/01/2017
					Designed	B.R.S
A	31/05/2017	B.R.S	B.R.S	D.B.R	Revised	B.R.S
Rev	Date	Designed	Revised	Approved	Approved	D.B.R

"The reproduction, distribution and utilization of this document as well as the communication of its contents to others without express authorization is prohibited. Offenders will be held liable for the payment of damages. All rights reserved." ISO 16016

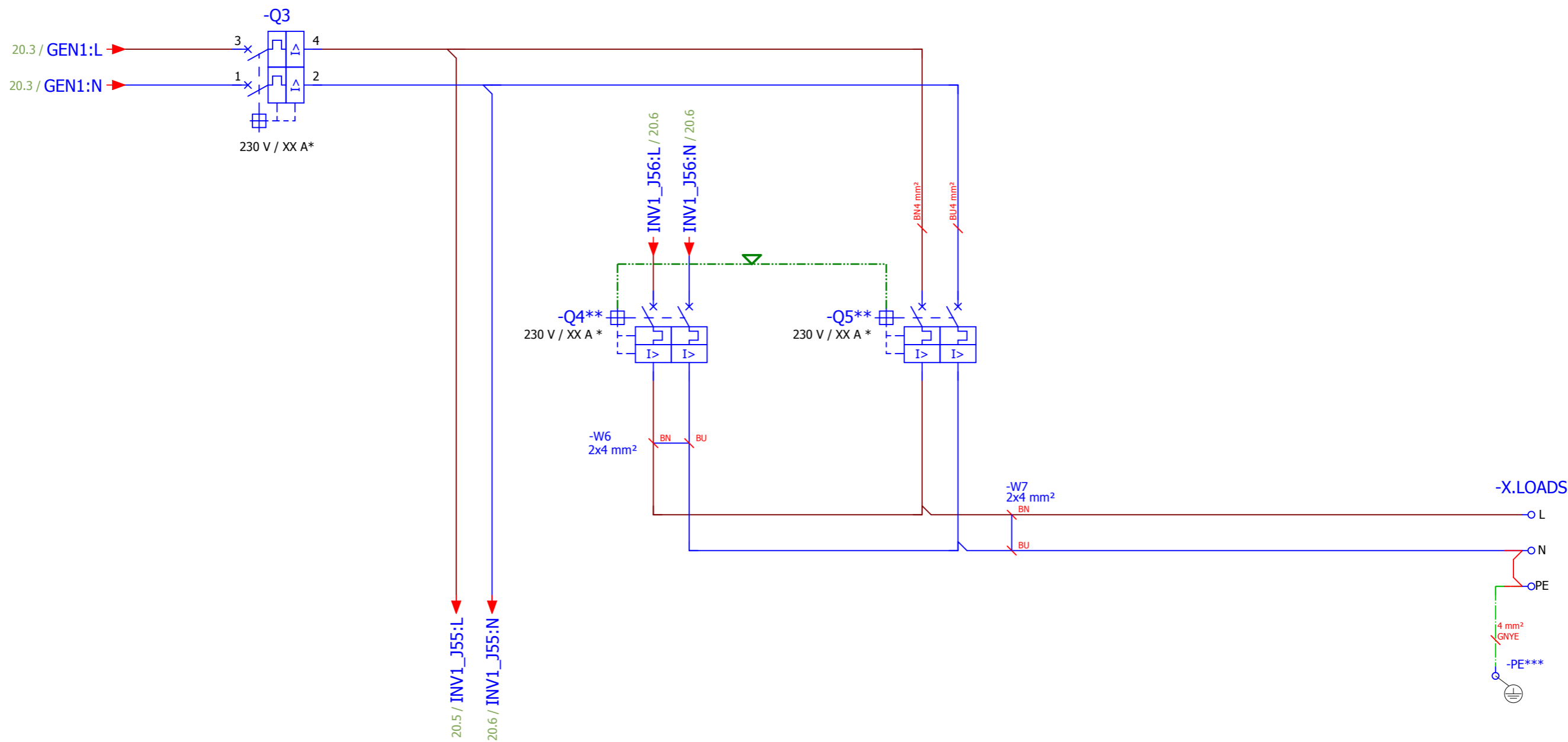
"Sin expresa autorización de Ingeteam, queda terminantemente prohibida la reproducción total o parcial de este documento, así como su uso indebido y/o exhibición o comunicación a terceros. De los infractores se exigirá el correspondiente resarcimiento de daños y perjuicios. Quedan reservados todos los derechos." ISO 16016



Date	04/01/2017					
Designed	B.R.S					
Revised	B.R.S					
Approved	D.B.R					
Rev	Date	Designed	Revised	Approved	Approved	D.B.R



TECHNICAL GUIDE FOR INSTALLATIONS WITH ISS 1PLAY
STAND ALONE SINGLE PHASE _A
ELEC DIAGRAM - CONTROL



* The nominal current depends on the power of the installation

** -Q4 and -Q5 are interlocked. In normal operating conditions -Q4 should be closed. -Q5 should only be operated in case of failure or inverter maintenance.

*** For TN and TT installations connect N to ground

"The reproduction, distribution and utilization of this document as well as the communication of its contents to others without express authorization is prohibited. Offenders will be held liable for the payment of damages. All rights reserved." ISO 16016

"Sin expresa autorización de Ingeteam, queda terminantemente prohibida la reproducción total o parcial de este documento, así como su uso indebido y/o exhibición o comunicación a terceros. De los infractores se exigirá el correspondiente resarcimiento de daños y perjuicios. Quedan reservados todos los derechos." ISO 16016

					Date	04/01/2017
					Designed	B.R.S
A	31/05/2017	B.R.S	B.R.S	D.B.R	Revised	B.R.S
Rev	Date	Designed	Revised	Approved	Approved	D.B.R